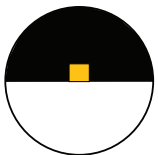
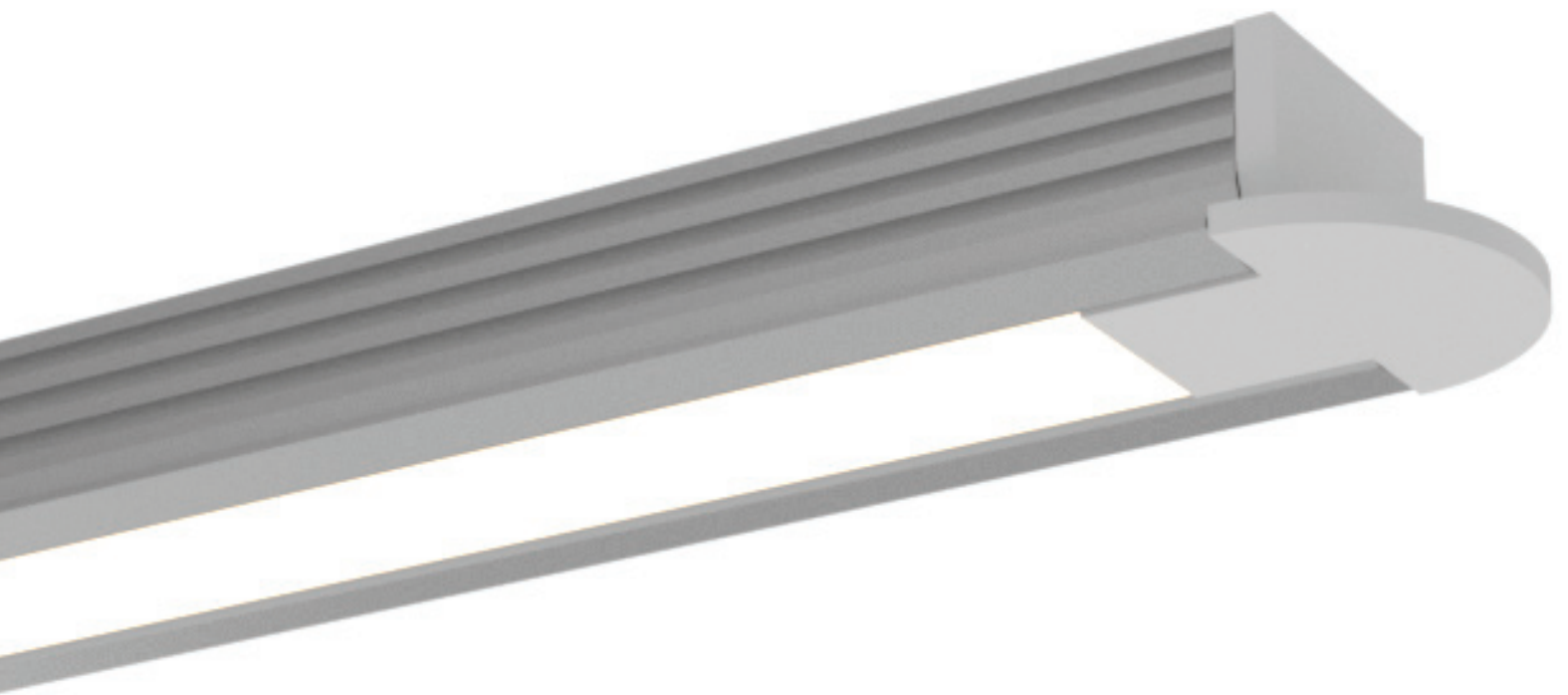
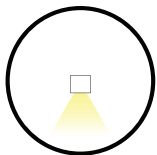


EDINGER

Design Guide



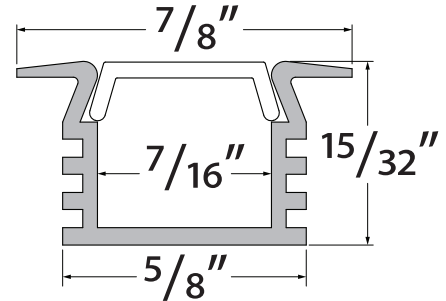
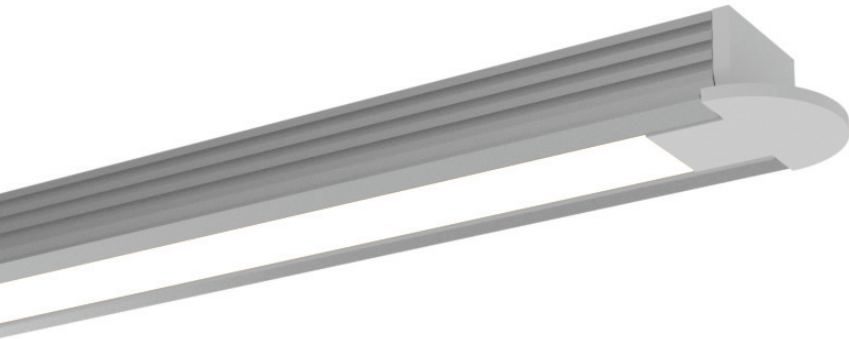
Recessed



Direct
Symmetric



PROFILE DIMENSIONS

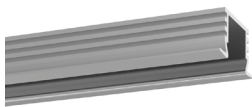


AVAILABLE TIVOTAPE™ OPTIONS

Based on 3000K / Delivered Lumens

SB 3 W/ft 127lm/ft	XS 3.3 W/ft 145lm/ft	HO 4.4 W/ft 186lm/ft	HD 7 W/ft 264lm/ft	VHO 7.2 W/ft 411lm/ft	Tunable White 3 W/ft 124lm/ft	RGB 4.1 W/ft 67lm/ft	RGBW 5.3 W/ft 129lm/ft (Total Delivered Lumen)	
 2200K	 2400K	 2700K	 3000K	 3000K	 3500K	 2200K - 3000K	 RGB	 RGBW
 3500K	 4000K	 5000K				 2700K - 4000K		
						 2200K - 6500K		

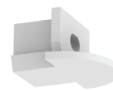
ORDERING INFORMATION



EDIN-CHAN-SLV-6.5
Silver Anodized Aluminum Extrusion, 6.5' Lengths



EDIN-LNS-OP-6.5
Lens, Opal, 6.5' Lengths



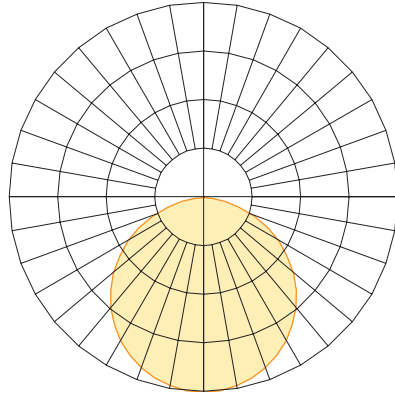
EDIN-EC-02
White Left/Right Powerfeed End Cap



EDIN-EC-01
White Left/Right Solid End Cap



MTBK-03
Mounting Clip

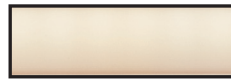


EDINGER WITH 3000K XS
Delivered Lumens per foot: 145
Watts per foot: 3.3
CRI : 97
Peak Candela: 55.5

Lens Pixelation



SB



XS



HO



VHO

